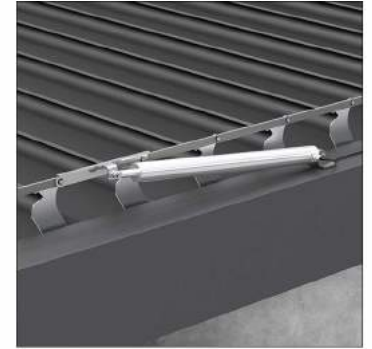




pergola sunbreaker⁴⁰⁰



Electric motor with a switch

Standard Colors:



FSM 71319 - Graphite



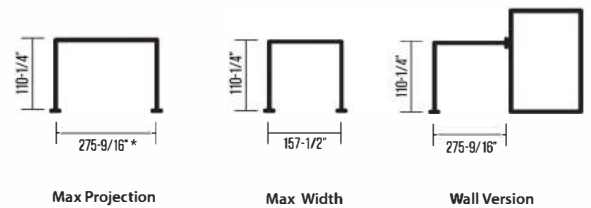
RAL 9016 - White

- Combinations are available within this color scheme, e.g. graphite construction / white roof
- Non-standard colors include the entire RAL palette are available for additional cost
- In the wall-mounted version wall brackets are included in price instead of 2 (or more) poles



RAL is a color matching system used in Europe, mainly used for varnish and powder coating.

Sizes:



*pergola with projection over 204-1/2" requires a middle pole supporting the construction

Blades:



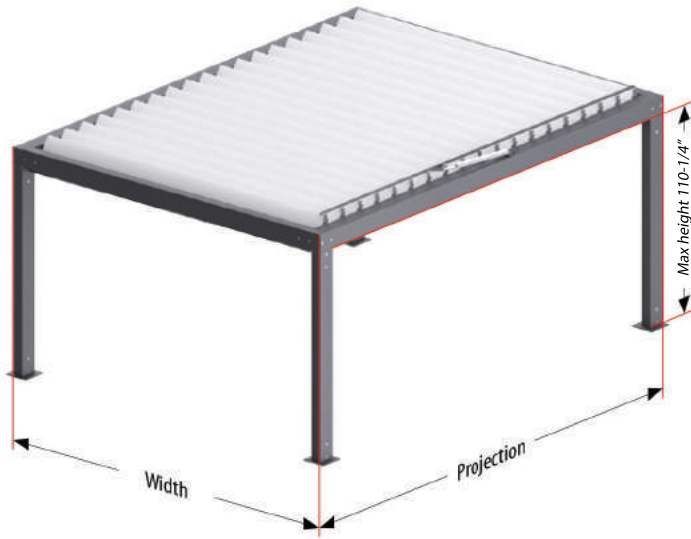
Blade end cap (bearing side)



Blade end cap (drive side)

Specifications:

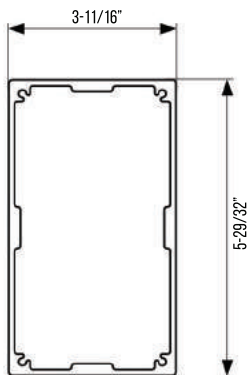
- Extruded aluminium construction with stainless steel elements
- Water drainage system integrated with the construction
- Sun and waterproof system
- Construction and roofing painted in any RAL colour
- Roofing made from rotating slats
- Maximum dimensions of single module: 13 ft width and 23 ft projection
- Possibility of modular connection
- Possibility of using a side panel system „ZiiiP 120"
- Construction in accordance with EN 1090 & PN-EN 1365



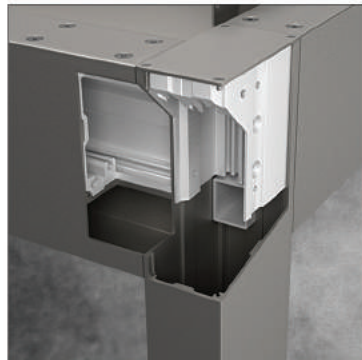
Version I for pergola with max 204-1/4" projection



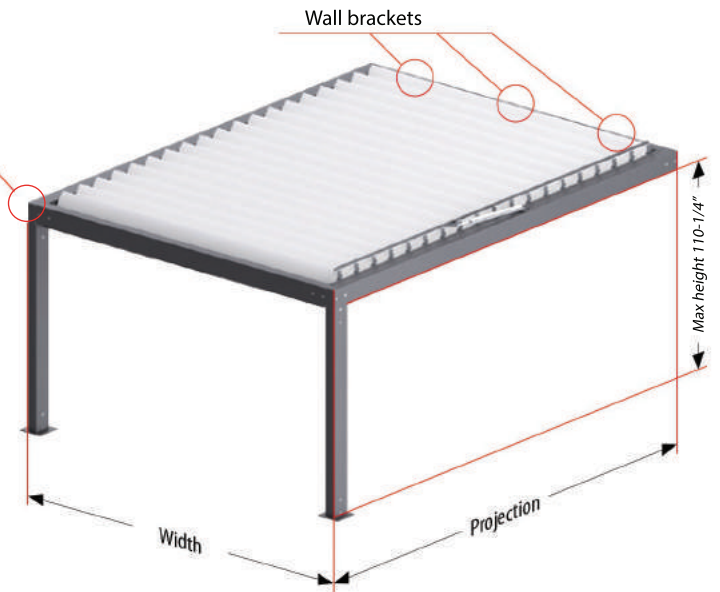
Version II for pergola with over 204-1/4" projection includes a middle pole supporting the construction



Beam / Pole cross-section

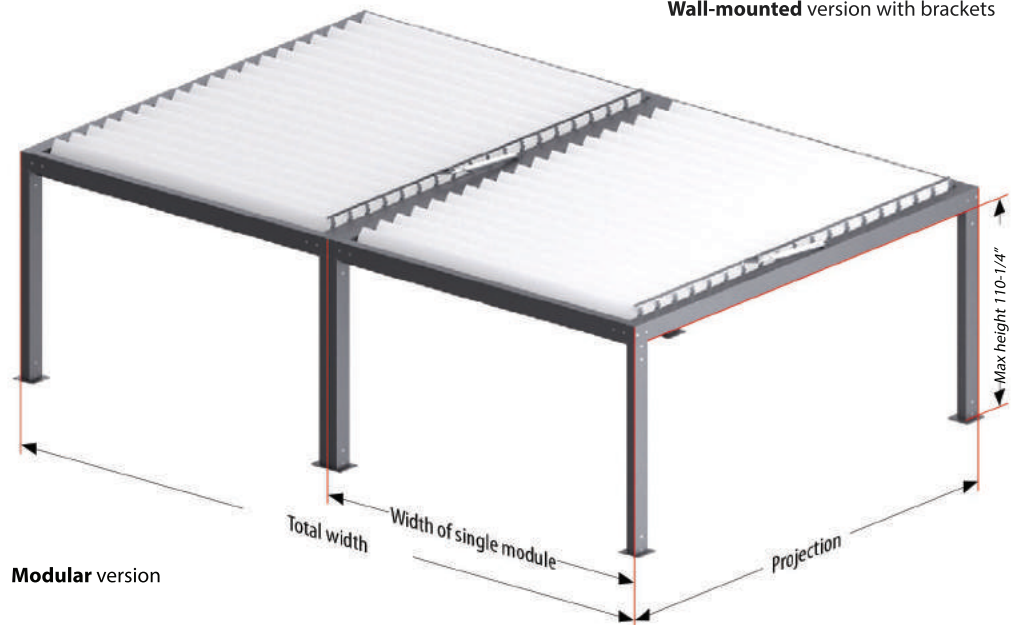


Beam / Pole cross-section (Water drainage system)



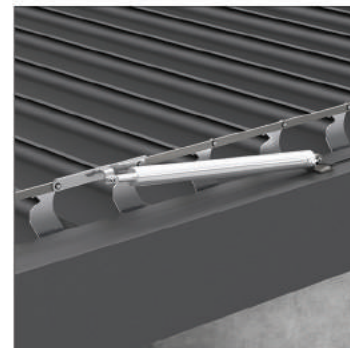
Wall-mounted version with brackets

Modular version should be applied when the width exceeds 157.5", e.g. for 236.2" width - 2 modules with 118.1" or 157.5" and 78.7". Price for a SB400 modules is calculated as separate pergolas with selected dimensions.



Modular version

pergola sunbreaker⁵⁰⁰



Electric motor with a switch

Standard Colors:



FSM 71319 - Graphite



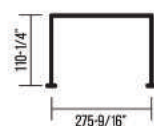
RAL 9016 - White

- Combinations are available within this color scheme, e.g. graphite construction / white roof
- Non-standard colors include the entire RAL palette are available for additional cost
- In the wall-mounted version wall brackets are included in price instead of 2 (or more) poles

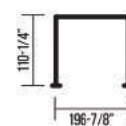


RAL is a color matching system used in Europe, mainly used for varnish and powder coating.

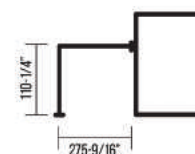
Sizes:



Max Projection



Max Width



Wall Version

Blades:



Blade end cap
(bearing side)



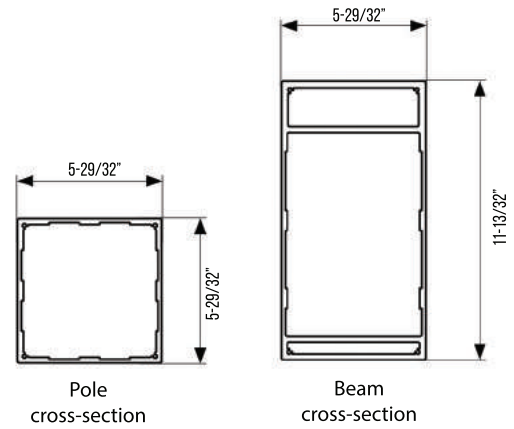
Blade end cap
(drive side)

Specifications:

- Extruded aluminium construction with stainless steel elements
- Water drainage system integrated with the construction
- Sun and waterproof system
- Construction and roofing painted in any RAL color
- Roofing made from rotating slats
- Maximum dimensions of single module: 16 ft width and 23 ft projection
- Possibility of modular connection
- Possibility of using a side panel system „SLIDE“ & “Ziip 120”
- Construction in accordance with EN 1090 & PN-EN 1365



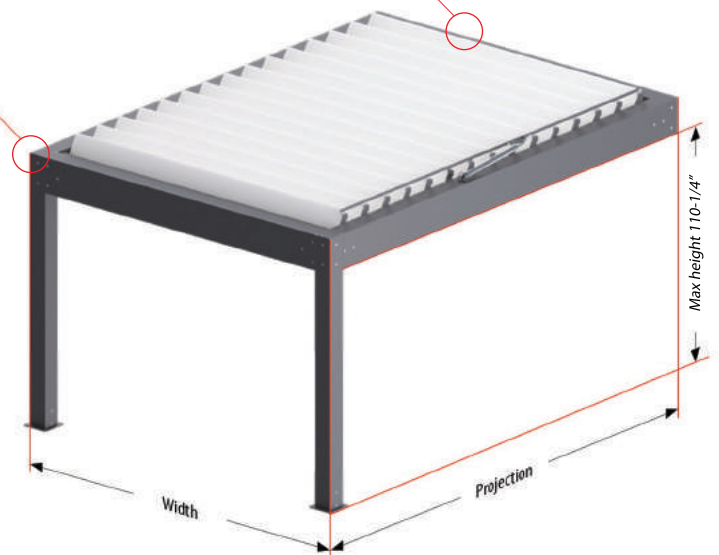
Free-standing version



Wall beam bracket

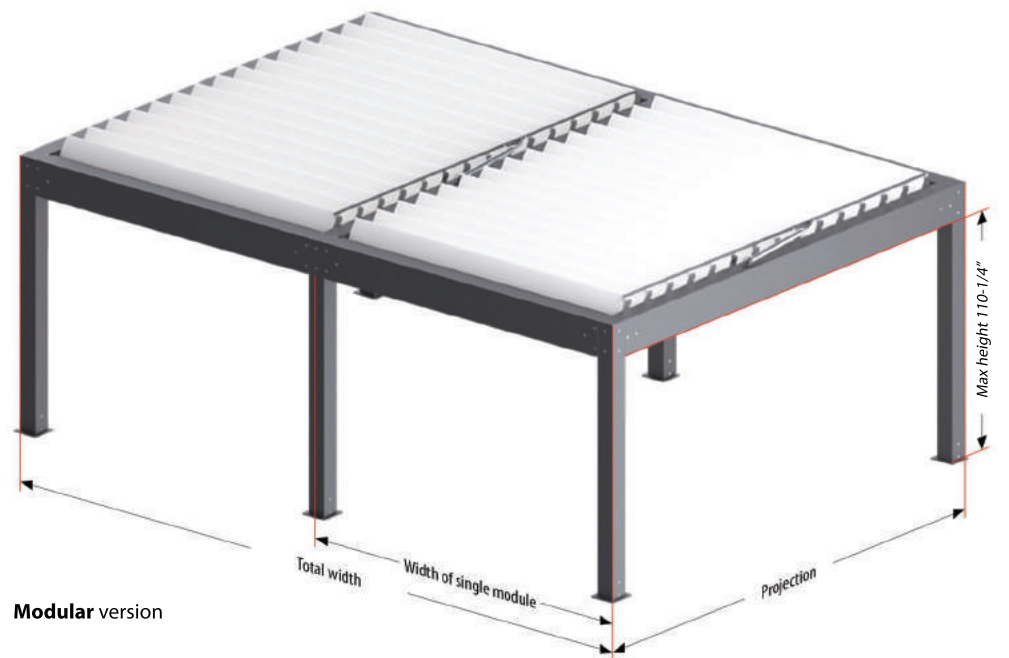


Beam / Pole cross-section
(Water drainage system)

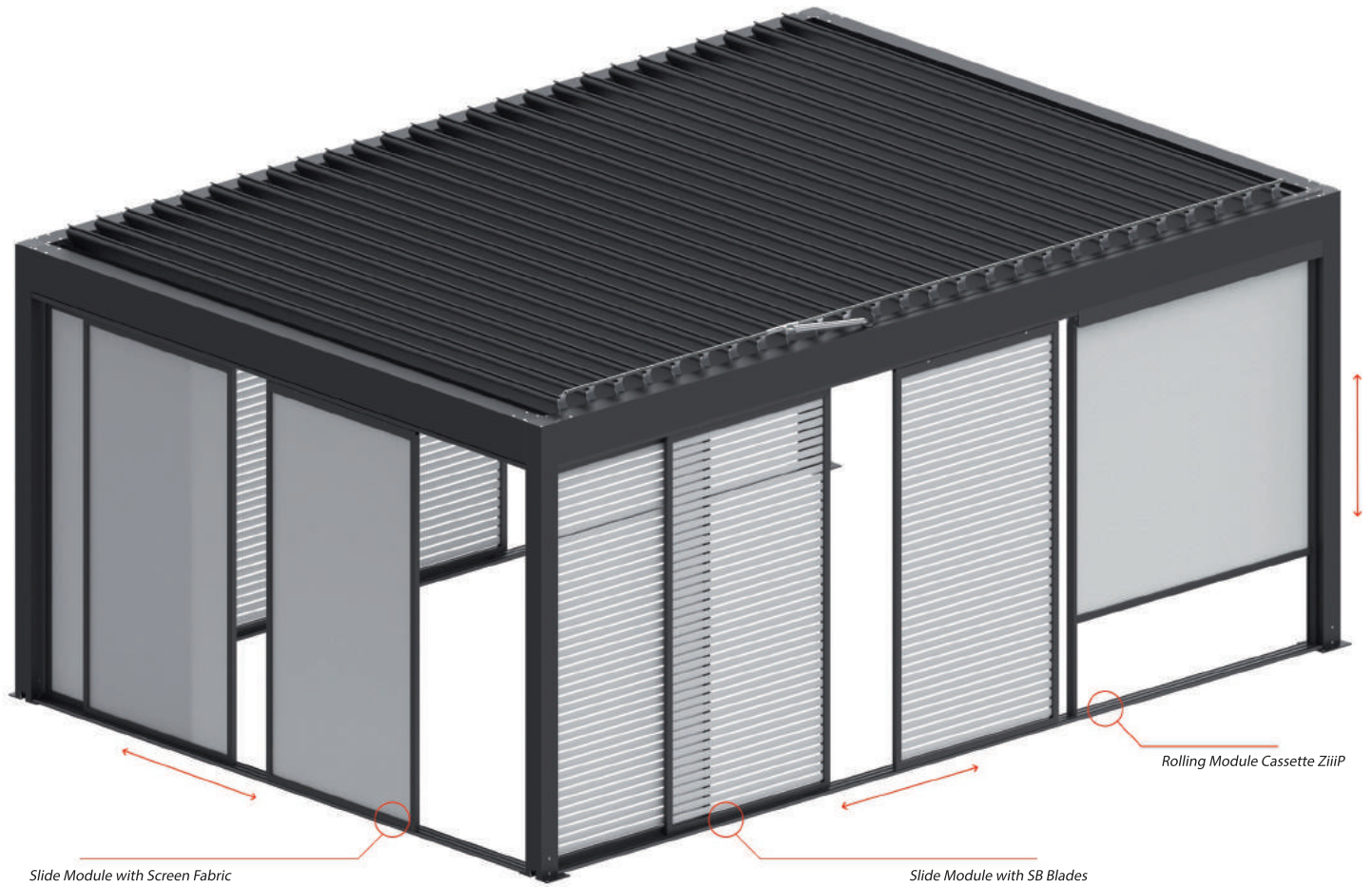


Wall-mounted version with beam bracket

Modular version should be applied when the width exceeds 196.9', e.g. for 315" width - 2 modules with 157.5" or 196.9" and 118.1". Price for a SB500 modules is calculated as separate pergolas with selected dimensions.



Modular version



CASSETTE - Ziiip 120

Max width 157-1/2"
Max height 157-1/2"

CASSETTE - Ziiip 120 LARGE

Max width 196-14/16"
Max height 118-1/8"



Both cassettes **Ziiip 120** can be filled with fabrics from **SERGE** collection (see SELT Fabric Catalog)

SLIDE MODULE WITH SB BLADES 2" WIDE

Remarks:

- Uniform colors (frame and blades in the same color)
- Mixed colors (e.g. graphite frame and white blades)
- Standard construction colors - **RAL 9016 White** and **FSM 71319 Graphite**

with of the system (inch)	number of panels
up to 110-1/4"	2
110-5/8" - 165-3/8"	3
165-3/4" - 220-1/2"	4
220-7/8" - 263-3/4"	5

FALL 2020



SLIDE MODULE WITH SCREEN FABRIC

Remarks:

- Modules can be installed on every side of the pergola
- Panels can be filled with fabrics from **SERGE** collection

with of the system (inch)	number of panels
up to 110-1/4"	2
110-5/8" - 165-3/8"	3
165-3/4" - 220-1/2"	4
220-7/8" - 263-3/4"	5

FALL 2020





Selt Systems, Inc.

Phone: +1 (630) 332 8600

Email: contact@seltsystems.com

Location: 889 N Larch Ave, Elmhurst, IL 60126

seltsystems.com