



**selt**   
sun  
protection  
systems



# SERGE 600

PURE BLACK



60030030

CHARCOAL - BRONZE



60010011

SANDSTONE



60033033

GREY - SAND



60001003

LINEN - LINEN



60008008

LINEN - WITE



60008002

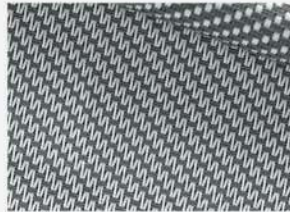
# SERGE 1%

WHITE - WHITE



61002002

GREY - WHITE



61001002

PEARL - GREY



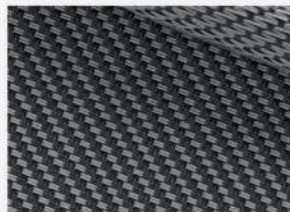
61007007

GREY - GREY



61001001

GREY - CHARCOAL



61001010

CHARCOAL - CHARCOAL



61001010

BRONZE - BRONZE



61011011

LINEN - LINEN



61008008

Pure Black	Charcoal - Bronze	Sandstone	Grey - Sand	Linen - Linen	Linen - Wite	Tearing resistance (dan) UNE EN ISO 4674-1 method 2 - Warp: 8,5; Weft: 7,5 Breaking strength (dan/5cm) UNE EN ISO 1421 - Warp: 260; Weft: 225 Flame retardant - Certificate on request	composition weight [g/m²] thickness [mm] light fastness blue scale level EN ISO 105 B02 EN ISO 105 B04 openness factor [%] TS [%] RS [%] AS [%] TV [%] application	EN 14501									
42% glasfibre + 58% pvc									525	0.74	>7	5	5.9	3.7	90.4	5.9	interior / exterior
													6.1	6.5/6.0	87.4/87.9	6.1	
													7.1	20.4/20.5	72.4/72.5	6.8	
													4.7	26.5/21.5	68.8/73.8	4.5	
													14.9	52.5/52.7	32.5/32.4	12.9	
													15.5	58.2/56.4	26.4/28.1	13.7	
<b>SERGE 600</b>																	



White - White	Grey - White	Pearl - Grey	Grey - Grey	Grey - Charcoal	Charcoal - Charcoal	Bronze - Bronze	Linen - Linen	Tearing resistance (dan) UNE EN ISO 4674-1 method 2 - Warp: 5,9; Weft: 6,2 Breaking strength (dan/5cm) UNE EN ISO 1421 - Warp: 321; Weft: 277 Flame retardant - Certificate on request	composition weight [g/m²] thickness [mm] light fastness blue scale level EN ISO 105 B02 EN ISO 105 B04 openness factor [%] TS [%] RS [%] AS [%] TV [%] application	EN 14501									
42% glasfibre + 58% pvc											638	0.78	>7	1	5.9	71.3	15.9	12.9	interior / exterior
															2.2	44.8/31.2	53/66.6	2	
															2.8	36.9	60.3	2.1	
															2.4	17.4	80.2	2.2	
															1.2	10.5/14	88.3/84.8	1.2	
															1.1	5.9	93	1.1	
															1.4	8.6	90	1.3	
															5.9	54.2	39.9	3.7	
<b>SERGE 1%</b>																			





## **Selt Systems, Inc.**

Phone: +1 (630) 332 8600

Email: [contact@seltsystems.com](mailto:contact@seltsystems.com)

Location: 889 N Larch ave Elmhurst IL

**[seltsystems.com](http://seltsystems.com)**